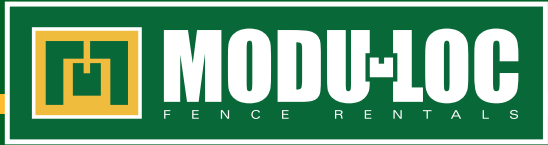


FENCE INSTALLATION GUIDE



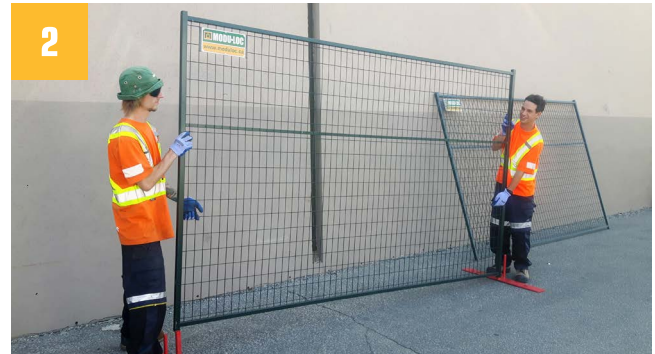
Thank you for choosing Modu-Loc Fence Rentals! Please follow these steps to ensure that your fence is correctly and safely installed.

STEP 1 - LAY BASES



All Modu-Loc fence bases consist of one square and one round peg. Lay out fence bases 10 ft apart with all of the round pegs facing the direction you will build your fence.

STEP 2 - INSTALL PANELS



With a partner, begin assembling the fence panels onto the bases. Insert the square peg into the panel first, then drag the panel back to the previously installed base and place it on the round peg.

Please note all our fence is installed with the Modu-Loc label plate on top and the horizontal bar facing into the site.

STEP 3 - INSTALL GATES



Gates can be installed anywhere in the fence line. Gates swing on the round peg. When installing a gate, place one spacer over the round peg **(a)** before placing the panel onto the base **(b)**. This will elevate the panel and allow the gate to swing freely. Install the wheel at the opposite end of the panel **(c)**. With the spacer and wheel installed, the gate should be level and swing freely.

STEP 4 - INSTALL CAPS AND/OR U-BOLTS



IF USING CAPS: Now you're ready to finalize the fence set-up by installing the caps. All the caps also consist of one square and one round peg. These need to be installed in the same fashion that the bases were laid out: round pegs line up with round pegs and square with square. Insert the cap into the top of the panel, and slide the cap in completely.



IF USING U-BOLTS: Now you're ready to finalize the fence set-up by installing the u-bolts. U-bolts are installed at approximately 6 ft high, connecting two panels. The bolts should be securely fastened and face into the site.

STEP 5 - ADD ACCESSORIES/SIGNAGE



Place your signage, delineators, cones, or screen on the fence. Please note that fence lines with scrim can become a hazard if not properly secured or stabilized. Contact your local sales rep for additional stability solutions.

Relocation and Removal

RELOCATION: Relocation or modification of fence set-up can be requested by calling your nearest Modu-Loc branch.

REMOVAL: Once fence is dismantled, contact your local Modu-Loc branch to schedule a pick-up.

Fence must be in the same state as it arrived (stacked with all material together). Fence must be free of any non-Modu-Loc signage or banners when scheduled for pick-up.

FOR ASSISTANCE, PLEASE CONTACT YOUR LOCAL BRANCH

Vancouver
604-525-4544
servicevcr@moduloc.ca

Kelowna
250-491-4110
service.kelowna@moduloc.ca

Calgary
1-800-522-8371
servicecg@moduloc.ca

Port Hope
905-461-6000
service@moduloc.ca

Greater Toronto Area
905-461-6000
service@moduloc.ca

Cambridge & London
(519) 624-9210
service@moduloc.ca

Ottawa
613-260-1970
service.ottawa@moduloc.ca

Montreal
514-881-8715
service.montreal@moduloc.ca

Quebec City
418-832-1166
service.quebec@moduloc.ca

MODU-LOC BEST PRACTICES

- Do not install screen or signs on gates
- Keep walking paths clear of tripping hazards*
- Install fence on level ground
- Keep fence line free of obstacles and debris
- Always install fence with a partner
- Avoid free-standing panels

*To properly address any safety or liability concerns, please contact your local rep for Modu-Loc safety products.