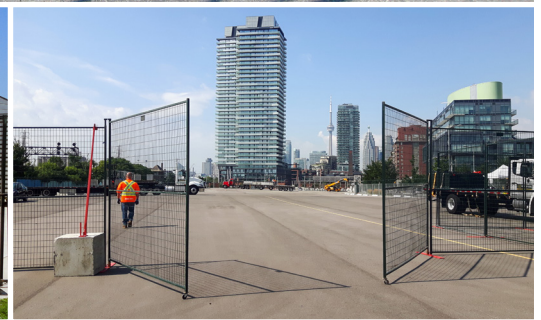


# GATE ASSEMBLIES



**Modu-Loc fence systems include pedestrian and vehicle access gates. Our gates can be placed anywhere in the fence line, allowing for effective control.**

**PERSONNEL AND VEHICLE ACCESS** – options include sliding gates, integrated man-door panels, hinged swing gates and wheeled bases

**ALL-TERRAIN OPTIONS** – larger wheels for rough or uneven surfaces

**VISIBLE ACCESS** – integrated hi-vis gate systems that stand out from the fence line

**INCREASE SECURITY** – with controlled access points

**USER-FRIENDLY** – easily operated by a single person

**VARIOUS CONFIGURATIONS AVAILABLE, INCLUDING:**

- 5' pedestrian gate
- 10' swing gate
- 10' sliding gate
- 20' double swing gate
- 20' double sliding gate

**Providing industry-leading site containment solutions nationwide**

**1-800-522-8371 | [www.moduloc.ca](http://www.moduloc.ca)**

**GATE-2022-11-V01**